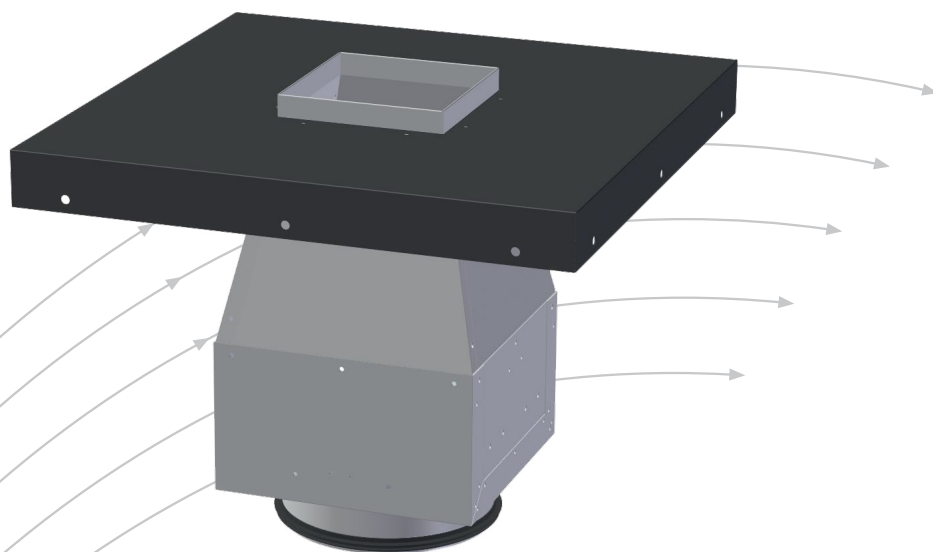


JTA-2

Exhaust hood for recessed mounting
in the ceiling



- Long throw length
- Coated top plate
- Drainage of damper case

epd

NEPD-5861-5141

TROX[®] TECHNIK

Auranor

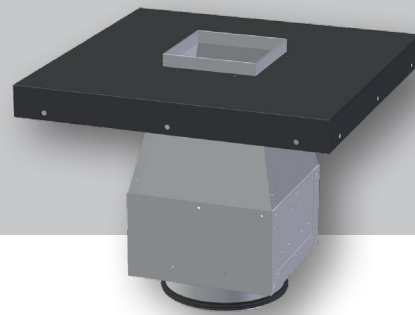
TROX Auranor AS

Auranorvegen 6
NO-2770 Jaren

Telephone: +47 61 31 35 00

E-mail: office-no@troxgroup.com
www.trox.no/en

JTA-2



APPLICATION

JTA-2 is a rectangular exhaust hood for high air discharge. It is manufactured to be immersed into the roof or to be mounted in a roof construction.

DESIGN

JTA-2 consists of an exhaust cone and damper section, and a top plate. It has a self-closing damper and internal drainage with a nipple connection to a Ø32mm water pipe. There is a nipple to connect to a spiral duct at the bottom of the unit. Sizing of the top plate can be customized upon request.

MATERIALS AND SURFACES

JTA-2 is produced in galvanized steel with a damper made out of aluminium. The connector has a EPDM rubber disk, and the top plate is coated in black RAL 9005. JTA-2 can be manufactured in other materials or coated upon request. As special materials, it can be supplied in stainless steel, acid-resistant steel, or Magnelis. (Uncoated top plate with Magnelis.)

QUICK SELECTION

Type	JTA-2 [m³/h]		
	50Pa	75Pa	100Pa
200	805	986	1138
250	1310	1604	1852
315	2065	2529	2920
400	3286	4025	4648
500	5091	6235	7200
630	8095	9914	11448
800	13500	16534	19092
1000	20785	25456	29394
1250	33141	40589	46868

Table 1: The table displays air flow rates in m³/h

SIZING DIAGRAM

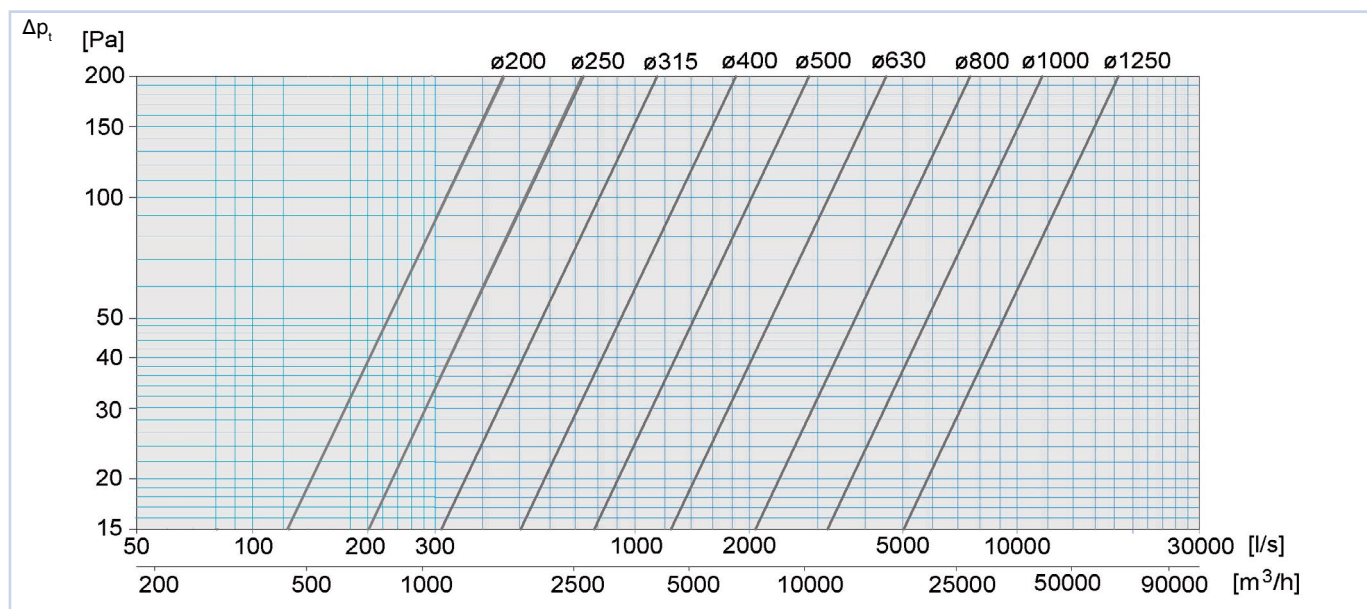
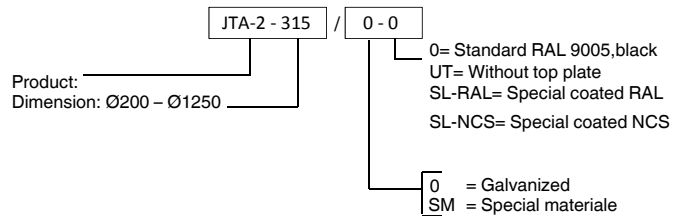


Diagram 1

ORDER CODE, JTA-2

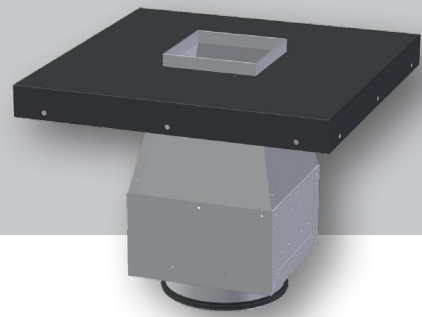


JTA-2 - 315 / 0-0

Explanation:

JTA-2 dimension Ø315, galvanized, black

JTA-2



DIMENSIONS AND WEIGHTS, JTA-2

Cut-out dimensions dim. 800, 1000 og 1250: C+50

JTA-2								Weight		
	Dim.	A	B	C	D	H1	H2	G	Complete unit (kg)	Damper case (kg)
200	500	150	244	199	200	140	30		6	-
250	550	188	294	249	250	175	30		8	-
315	615	236	359	314	300	220	40		11	-
400	700	300	444	399	364	280	45		15	-
500	800	375	544	499	500	350	45		21	-
630	930	473	674	629	595	440	50		32	-
800	1100	600	844	799	690	480	45		47	21
1000	1300	750	1044	999	830	585	50		71	31
1250	1550	938	1294	1249	1090	700	60*		106	45

Table 2- *Dim. 1250 has two drainage plugs placed diagonally.

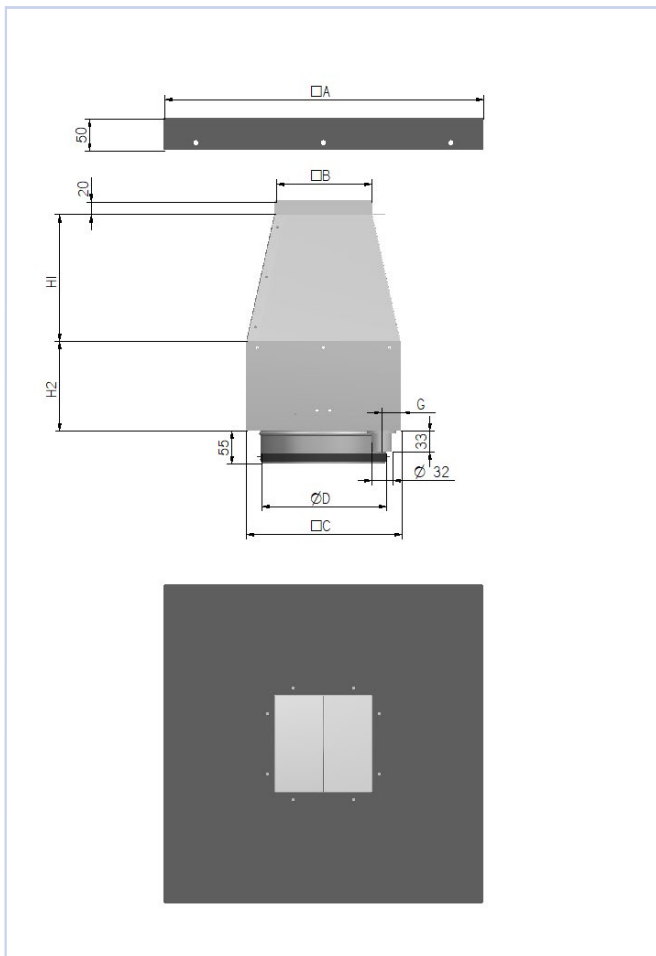


Figure 1: Dimension 200-630

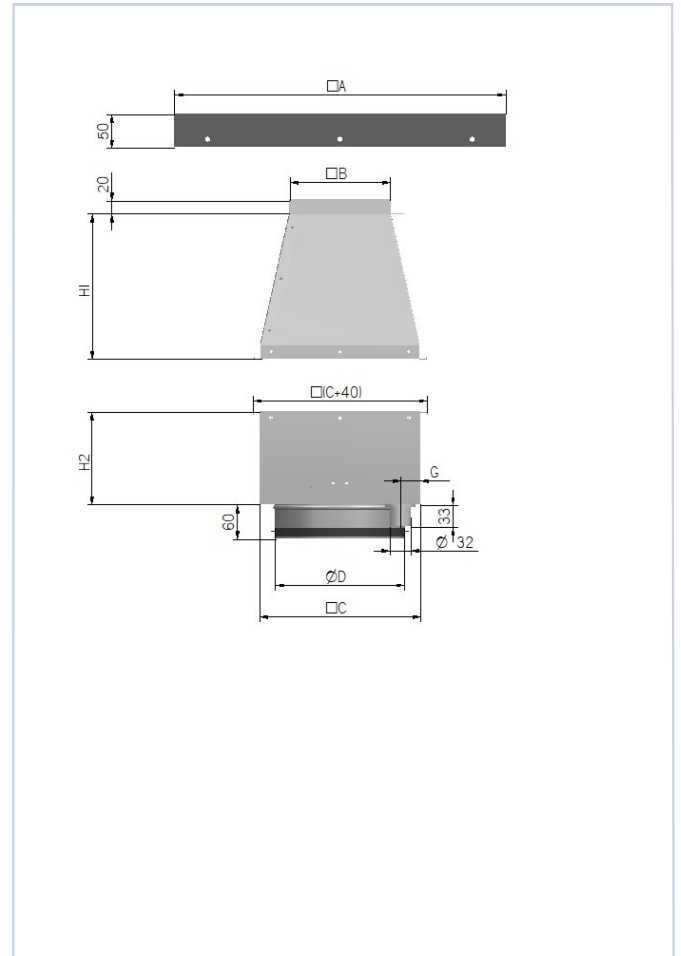


Figure 2: Dimension 800 - 1250

JTA-2

THROW LENGTH

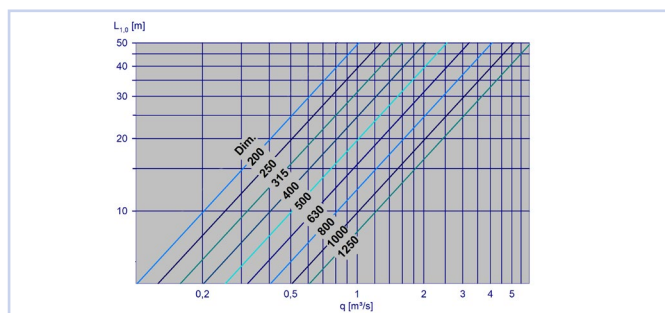


Diagram 2

INSTALLATION

The top plate is attached to the roof, and the JTA-2 unit is mounted from below and is then mounted to the top plate. Mounting instructions are displayed in figure 3 and 4. Ensure that there is a tilt towards the drainage outlet. Dimension 200-630 is shipped as one unit. Dimension 800, 1000 and 1250 is shipped as two units and is mounted together with the included guide rails. Cut-out dimensions dim. 800, 1000 og 1250: C+50, see figure 2.

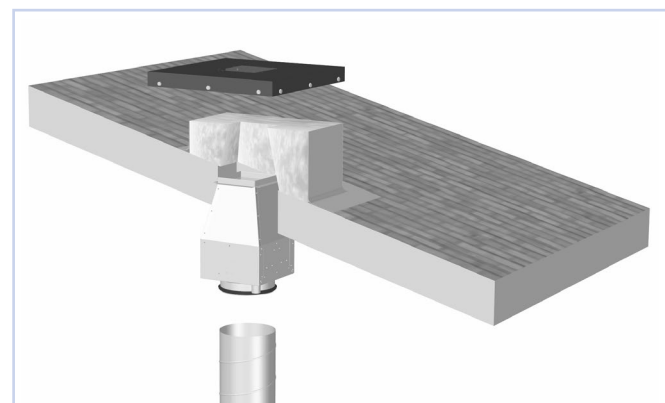


Figure 3: Installation (1)

ENVIRONMENT

Enquiries regarding product declaration can be directed to our sales team, or information can be found on our website: www.trox.no

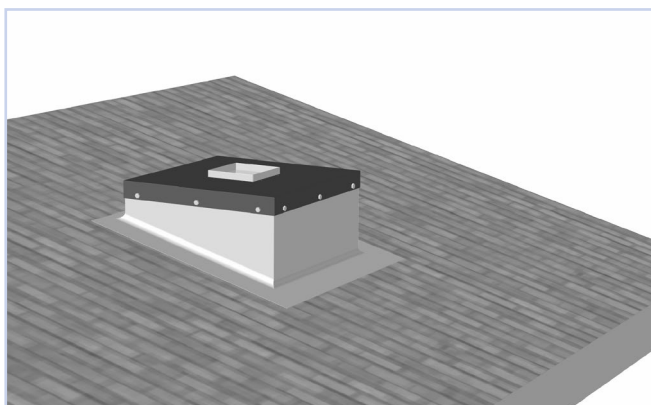


Figure 4: Installation (2)

JTA-2 is developed and manufactured by:

The company reserves the right to make amendments without prior notice.