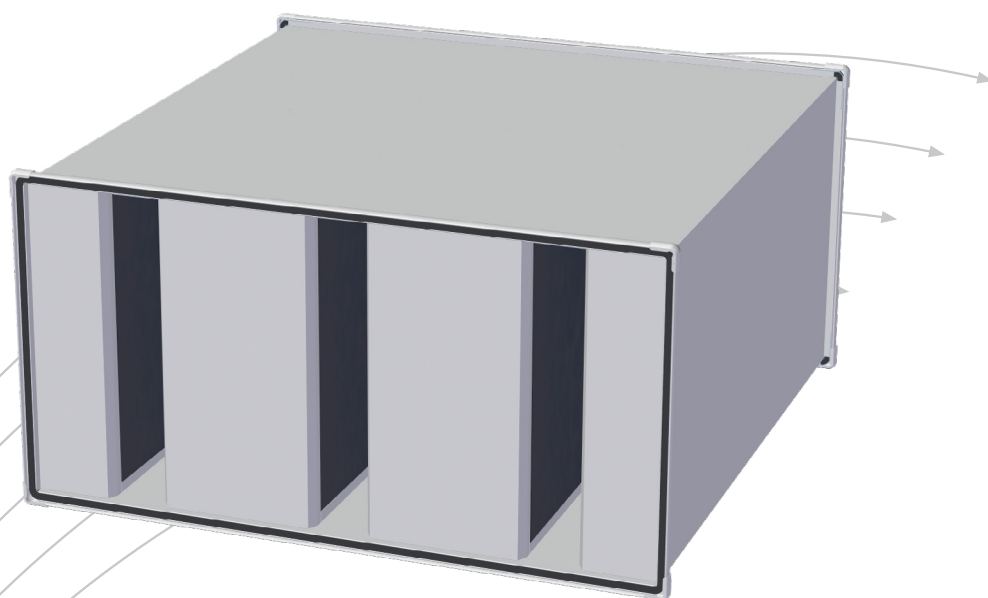


# LKK

## Rectangular attenuator



- Easy installation
- Dimensions, pressure drop and sound attenuation to suit every requirement.
- Included in the "Attenuator Selection" computer program

# TROX<sup>®</sup> TECHNIK

 **Auranor**

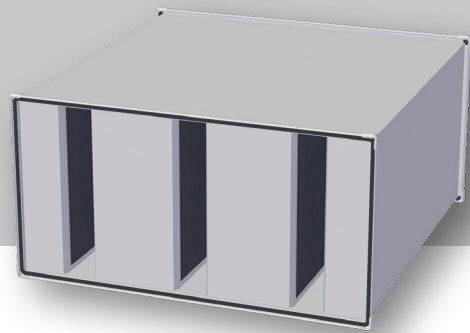
TROX Auranor Norge AS

Auranorvegen 6  
NO-2770 Jaren

Telephone +47 61 31 35 00

e-mail: [office-no@troxgroup.com](mailto:office-no@troxgroup.com)  
[www.trox.no](http://www.trox.no)

# LKK



## APPLICATION

LKK is a rectangular sound attenuator for installation in rectangular ducting.

## DESIGN

LKK is a rectangular steel unit featuring internal vertical splitters with mineral wool with a glass fibre layer inside. The unit is equipped with a flanged connection at each end. LKK is available in heights from 400 mm to 3000 mm (100 mm increments), and in widths from 600 mm to 3000 mm (100 mm increments), and in lengths of 640, 1240, 1500, 1800 and 2480 mm. 1880 and 2480 mm systems are delivered as two-piece units. An LKK-V version is also available, and is a sound attenuator with connection collars forming a right angle in order to accommodate a right-angled bend. LKK and LKK-V complies air tightness class B.

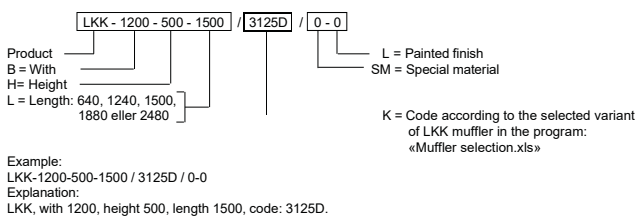
## MATERIALS AND SURFACE COATING

LKK comes in a galvanised steel design. The flanged joint is equipped with a polyethylene gasket. Splitters with mineral wool with a glass fibre layer have been fitted inside.

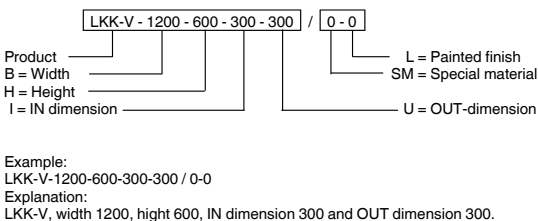
## QUICK SELECTION

In order to ensure optimum splitter combination, an "Attenuator Selection" computer program has been developed and is available for download from our website: [www.trox.no](http://www.trox.no)

## ORDER CODE, LKK



## ORDER CODE, LKK-V



## DIMENSIONS AND WEIGHT, LKK AND LKK-V

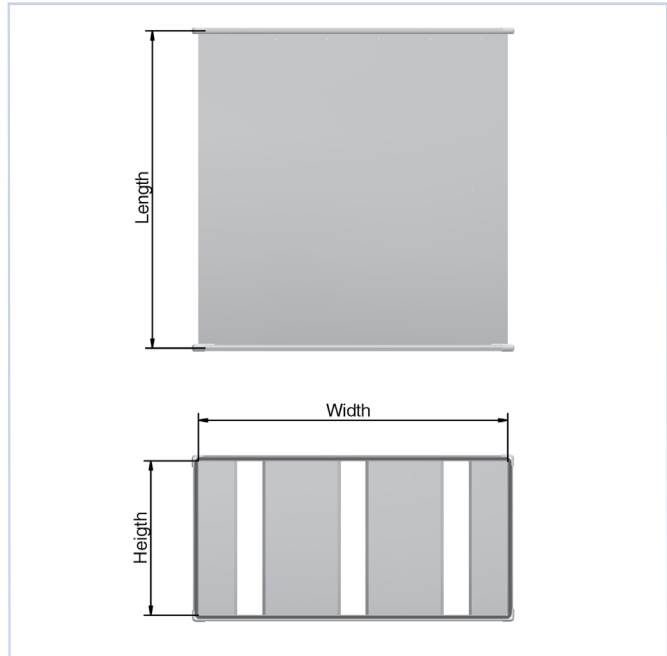


Fig. 1, LKK

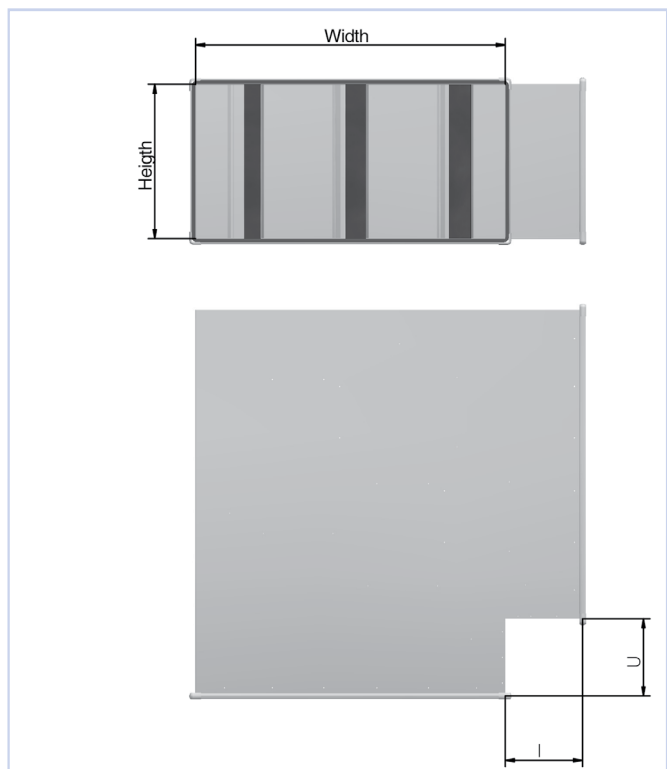


Fig. 2, LKK-V

[click here to go directly to our programs.](#)

## DIMENSIONING

Sizing programs can be found on our websites, **click here to go directly to our programs.**  
Or visit our website: [www.trox.no](http://www.trox.no)

## INSTALLATION

Installation principle shown in fig. 3.

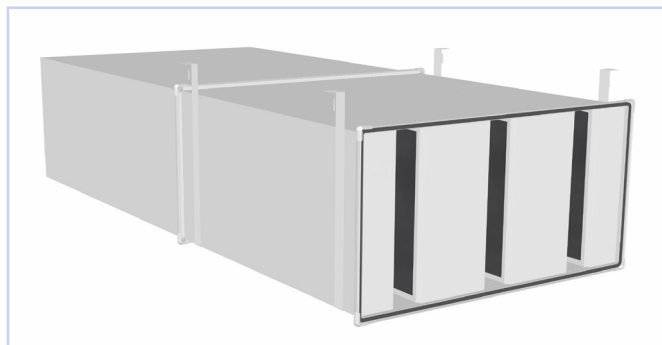


Fig. 3: Installation

## MAINTENANCE

The attenuation material used in LKK has a layer approved for mechanical cleaning with rotating nylon brushes.

## ENVIRONMENT

Enquiries regarding product declaration can be directed to our sales team, or information can be found at [www.trox.no](http://www.trox.no)