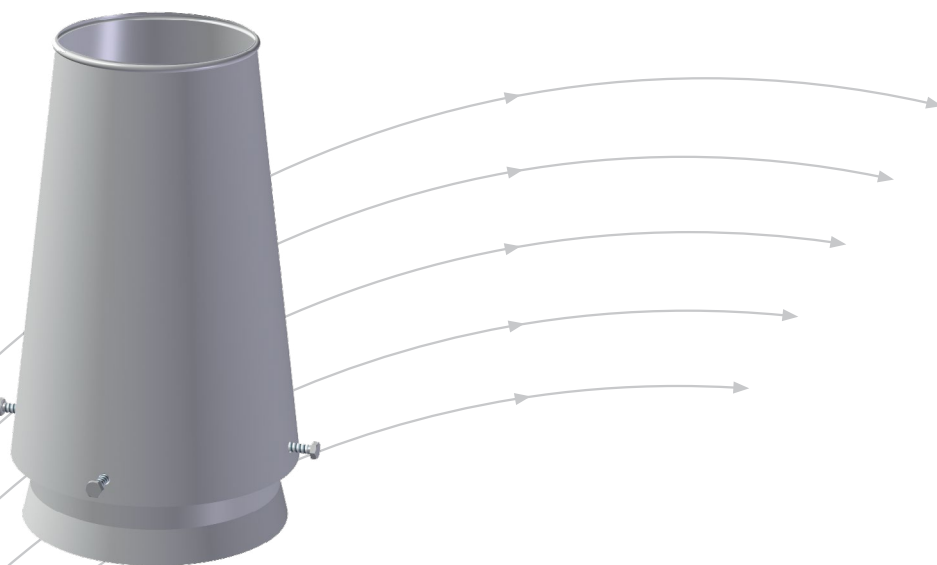


JTA-1

Roof Hoods-Exhaust



- Long throw length
- Connection duct as an added feature

epd

NEPD-5874-5152

TROX[®] TECHNIK

Auranor

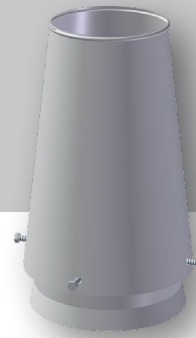
TROX Auranor AS

Auranorvegen 6
NO-2770 Jaren

Telephone +47 61 31 35 00

E-mail: office-no@troxgroup.com
www.trox.no/en

JTA-1



APPLICATION

JTA-1 is a circular exhaust hood for high air discharge. JTA-1 can be shipped either with a mounting ring to be mounted on a spiral duct, or with a rectangular foot plate for mounting on the roof.

DESIGN

JTA-1 consists of an exhaust cone and a damper, and is shipped either with a mounting ring or a foot plate. The self-closing dampers inhibits water ingress. An insulated connection duct that is adjusted to the foot-plate can be supplied as an added feature. The connection duct has an impermeable bottom plate that allows to connect any duct size. Sizing of the footplate and connection duct can be customized upon request. Dimensions Ø800, Ø1000 and Ø1250 are prepared for cording via Ø12mm mounting holes at the top of the cone. Ø800 has 3 holes, Ø1000 has 4 holes and Ø1250 has 5 holes.

MATERIALS AND SURFACES

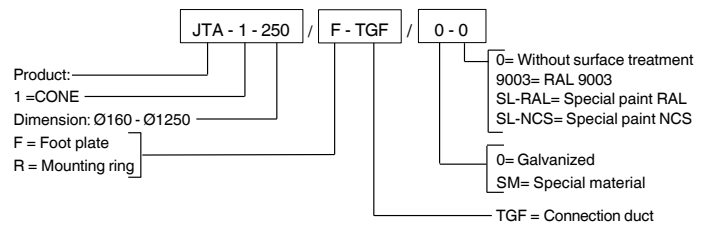
JTA-1 is produced in galvanized steel with a damper made out of aluminium. The product can be manufactured in other materials or coated upon request. The connection duct is manufactured in galvanized steel and insulated with mineral wool and glass fibre paper. As special materials, stainless steel, acid-resistant steel, or Magnelis can be provided.

QUICK SELECTION

Type	JTA-1 [m ³ /h]		
	50Pa	75Pa	100Pa
160	537	658	760
200	809	991	1145
250	1315	1610	1859
315	2065	2529	2920
400	3307	4050	4677
500	5196	6364	7348
630	8259	10115	11680
800	13500	16534	19092
1000	20785	25456	29394
1250	33190	40517	46708

Table 1: The table displays air flow rates in m³/h

ORDER CODE, JTA-1



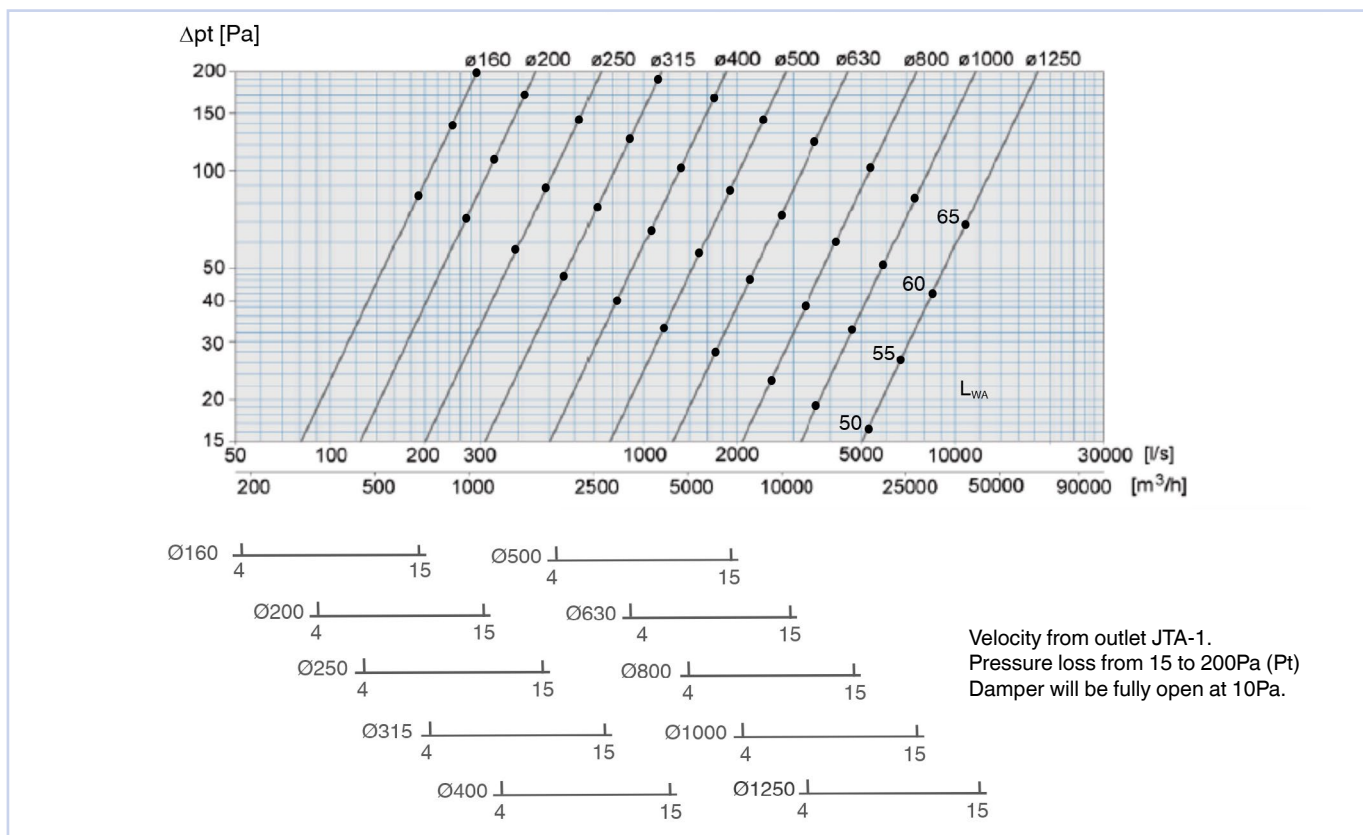
Example:

JTA-1-250 / F-TGF / 0-0

Explanation:

JTA-1 Cone Ø250, with foot plate and related connection duct.

SIZING DIAGRAM



JTA-1



DIMENSIONS AND WEIGHTS, JTA-1

JTA-1									Weight			
									Foot plate	Mounting ring	Cone	Connection duct
DIM	A	B	C	E	F	G	H	I	[Kg]	[Kg]	[Kg]	[Kg]
160	128	210	166	50	460	90	290	65	3,4	0,6	1,1	26
200	160	250	206	50	500	90	360	65	3,8	0,7	1,7	29
250	200	300	256	50	550	90	450	65	4,7	1,2	2,5	35
315	252	365	321	70	615	90	570	65	6,1	1,5	3,9	40
400	320	450	406	70	700	90	720	65	7,3	1,9	6,2	44
500	400	550	506	70	800	90	900	65	9,1	2,6	9,5	56
630	504	680	636	70	930	153	1135	132	13,7	5,8	15,1	67
800	640	850	806	70	1100	153	1440	132	19,5	9,3	34,5	82
1000	800	1050	1006	70	1300	153	1800	132	25,4	12,2	53,6	98
1250	1000	1300	1256	70	1550	153	1900	132	36,8	16,2	70,6	119

Table 2

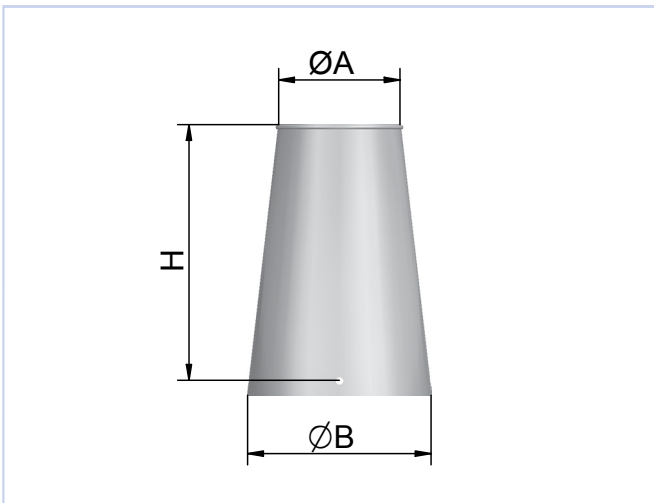


Figure 1: JTA-1 Cone

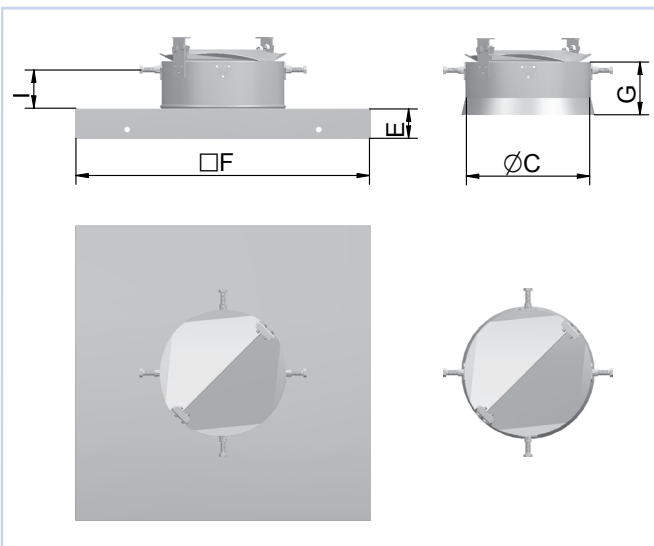


Figure 2: JTA-1 Foot plate and mounting ring

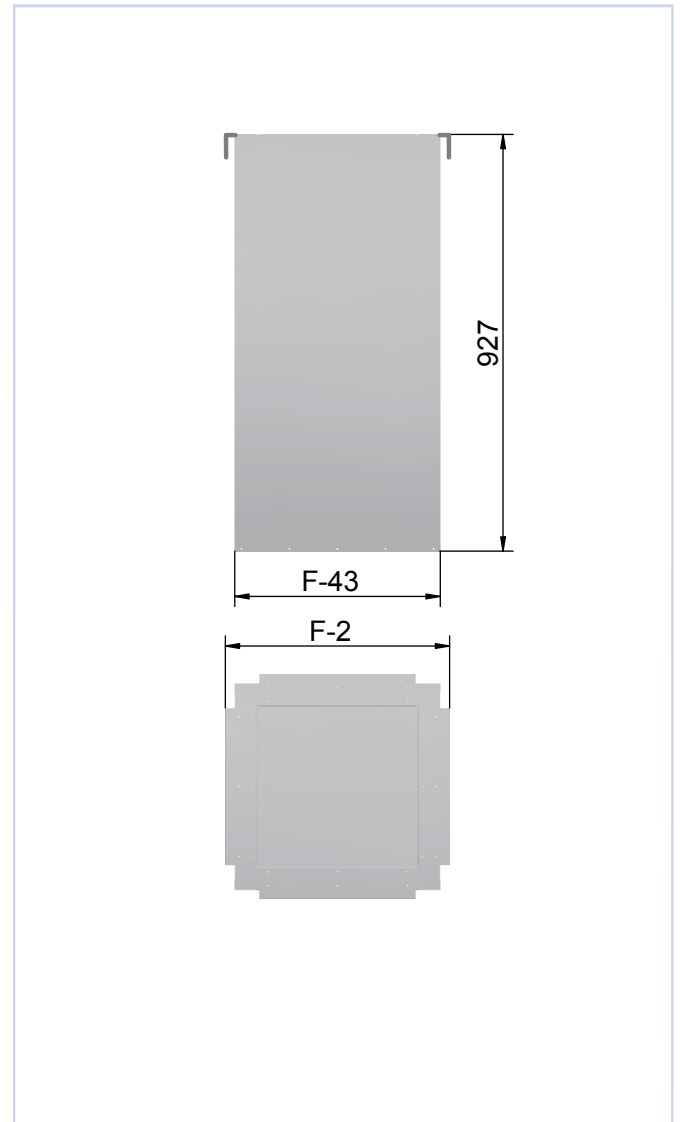


Figure 3: Connection duct

JTA-1

THROW LENGTH

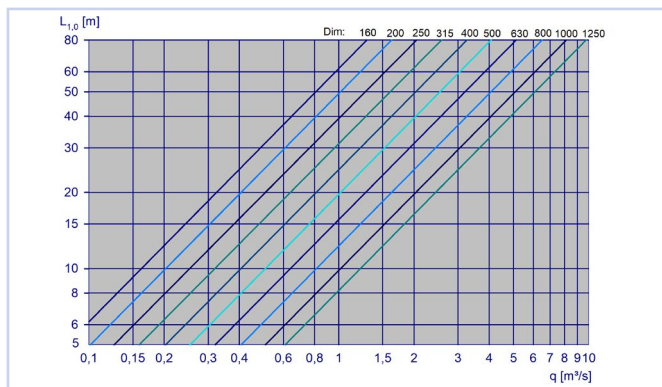


Diagram 2

INSTALLATION

Mounting instructions for JTA-1 with mounting ring is shown in figure 4. Figure 5 displays mounting of JTA-1 with foot plate.

IMPORTANT: In places exposed to strong winds, JTA-1 will have to be guyed to the roof.



Figure 4: Installation (1)

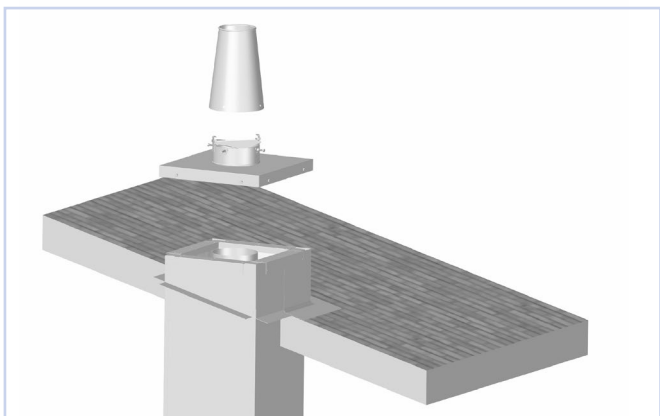


Figure 5: Installation (2)

ENVIRONMENT

Enquiries regarding product declaration can be directed to our sales team, or information can be found on our website: www.trox.no

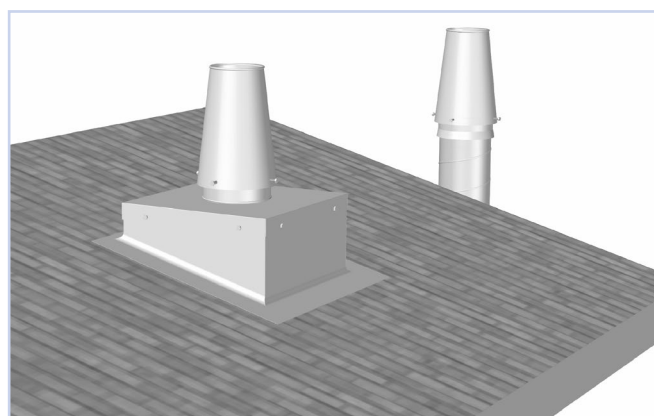


Figure 6: Installation(3)

JTA-1 is developed and manufactured by:

The company reserves the right to make amendments without prior notice.